



Cover Story



New Taipei City Drum Arts Festival

The Rhythmic “Empowerment” of Love
The “New Taipei City Drum Arts Festival” empowers you with rhythm and tempo. Our repertoires are both onsite and online, infusing different genres and media to create a crossover art festival for our audience. Our creative and diverse programs will “empower” our audience either on stage or on screen, invigorating and energizing everyone.



This year, our festival is inaugurated by the “Xinzhuang’s Xiang Ren He Studio Special Exhibition.” The exhibition will take place in the Xingzhuang Cultural Arts Center from May 15th to June 5th, offering an overview of the artistry and dedication of Xinzhuang’s master drum makers. We have also organized a special mobile stage truck to bring Xiang Ren He Studio’s performance to you. Between June 17-19 and 25-26, our mobile stage will travel to Xinzhuang, Tamsui, Sanchong, Shulin and Zhonghe for five performances. Our performers will engage, dazzle and enchant you with their Taiwanese flavors and drumming skills in your village, quarters and street. What’s more, you should not miss the one and only drum art workshop in our festival. Follow the instructions of our experts, and you will create empowering



rhythms by yourself. This time, nobody will miss out!

We will Dazzle you on Screen

From June to July, our online platform will feature numerous excellent performance recordings by seven highly-acclaimed performance groups, including the Golden Melody Award shortlisted “Sibongie” ensemble. Their drumming skills will form part of the dance, musical and theater shows. All programs will be live streaming online, bringing us an all-around artistic experience. Other ensembles online include: “Sibongie” which incorporates African drum art, dance and Taiwanese songs; other events included “Dance Works,” “Tap Radio,” “PPAI Studio” with their crossover dance performances. Also, “TW Peikuan,” who is known for their dedication to the traditional peikuan music, will incorporate percussions and traditional puppet show into their performance. “Stomp



New Taipei City Drum Arts Festival

📅 06/10-07/10
☎ 02-2960-3456#4640
🌐 www.culture.ntpc.gov.tw



Men” will show you how to turn recycled materials into instruments, beating the rhythms in ways you never imagined before. And surely you wouldn’t want to miss the unique repertoire of “Sun Son Theatre,” their program is a collaboration between body, environment and sound, and will expand the boundary of performance arts and theater. Our festival is further highlighted by the film, Into the Mountains, performed by the internationally renowned “U-Theatre,” their journey begins at Shisanceng, through water, hillside and mountaintop, across the Shuijinjiu region (Shinan Cave, Jinguashih and Jiufen). This is a pilgrimage that pays tributes to the land and mountain. The precious clips of the journey will be shown on our website.

For the information of our programs, please visit the website of Cultural Affairs Department, New Taipei City.

Editor's Choice



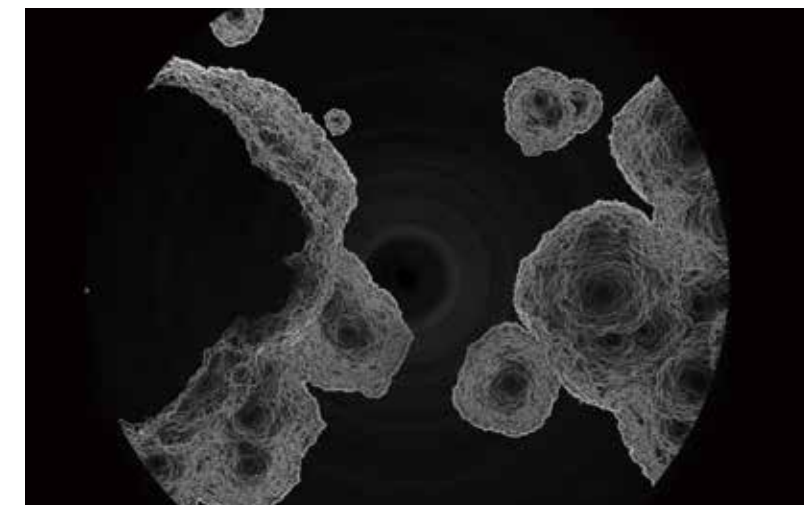
2022 MINE Art Festival

Our art festival in 2022 is a truly “local” event! We have co-created a brand-new installation artwork with the local community, moreover, we have invited Wang Wen Chih, an internationally renowned artist, to contribute to our artistic celebration by making 1 special piece of bamboo work for the event! You can also find 5 other Landscape art works which showcases the artistic beauty and the scenery of the mining town. Based on the concept of “journey to the mines,” we have designed three secret routes that were only known to the local community, inviting you to visit the joy of their childhood memories. The festival also features three excellent

performances, displaying the youthful energy of the Shuijinjiu region. Finally, the fashion designer Gioia Pan, who is internationally known for her signatory knitting wear design, has created forty pieces of fashion wears for this event, for the first time, drawing inspirations from Shuijinjiu’s mountainous landscape. As part of the festival team, U-Theatre will revitalize the goldmining town through crossover arts, promoting the beauty of the Shuijinjiu region amongst the international community.



📅 06/11-08/14
📍 Gold Museum, New Taipei City Government
☎ 02-2496-2800#2811, 2812
🌐 www.gep.ntpc.gov.tw



The Dome of Cosmos: An Immersive Exhibition

Fuzhong 15 loves to experiment! This time, we have inflated a big dome to create an “immersive space” in our building! That’s right, the space will open up your senses, taking you to the boundless cosmos and stun you with exceptional visual experience. Learning is also an important part of our exhibition. As such, we created a “Dome knowledge hub,” taking you through the design principle of the dome space and the basics of cinematography we use. In June, we will showcase a series of artworks made especially for The Dome of Cosmos, such as Samsara, White Box, and Micro Universe-Beginning, which incorporates video, sound,

visual art and digital multimedia contents. These artworks features various topics ranging from technology, biology, nature, astronomy, to surrealism. You will certainly experience the thrill of audio-visual technology surrounding you. The Dome of Cosmos opens daily from 10 am to 12 pm, and 2 pm to 5 pm. We are hoping to see you there.



📅 06/01-06/30
📍 Fuzhong 15
☎ 02-2968-3600#270
🌐 www.fuzhong15.ntpc.gov.tw



Shihsanhang Museum of Archaeology



- 🕒 09:30-17:00 (Closed on the first Monday of each month)
- 💰 NT\$80
- ☎️ 02-2619-1313
- 📍 No. 200, Museum Road, Bali District, New Taipei City
- 🚇 MRT → Tamsui MRT Station Ferry → Shuttle Bus Red No. 13 Shihsanhang Museum of Archaeology; or Ferry → Shuttle Bus Red No. 22, Bus No. 704 → Ren'ai.

Now Until 09/25

A Special Exhibition of Ancient Austronesian Food Cultures

Tamsui Historical Museum, New Taipei City



- 🕒 09:30-17:00 (Closed on the first Monday of each month)
- 💰 NT\$80
- ☎️ 02-2623-1001
- 📍 No. 1, Ln. 28, Zhongzheng Rd., Tamsui Dist., New Taipei
- 🚇 MRT Tamsui station is the terminal station. Once you arrive, you can take buses R26, 836 or 857 to Fort San Domingo.

Now Until July

I Left My Heart in Tamsui: A Celebration of Tamsui's History

Fuzhong 15



- 🕒 09:30-18:30 (Closed on the first Monday of each month)
- 💰 Free
- ☎️ 02-2968-3600#211
- 📍 No 15, Fuzhong Road, Banqiao District, New Taipei City
- 🚇 Taking MRT Line 5 to Fuzhong Station, Exit via Exit No 2. The Gallery is located approximately 40 meters at the rear of the Exit. Alternatively, exit MRT station via Exit 1, turn right at the rear of the Gate, cross the Road and proceed straight ahead. Approximately 3 minutes to the Gallery.

Now

MAGIC

Xinzhuang Cultural Arts Center



- 🕒 09:00-17:00 (Closed on the first Monday of each month)
- 💰 Free
- ☎️ 02-2276-0182#101
- 📍 No. 133, Zhongping Rd., Xinzhuang Dist., New Taipei City
- 🚇 Take "Nangang Exhibition Hall-Yongning" line and get off at Xinpui Station. Then, take bus No. 805 or Blue No. 18 at MRT exit No. 5 and get off the bus at the "Xintai Swimming Pool" Stop.

Now Until 06/05

The Drums of Xiang Ren He: 2022 Xingzhuang Special Exhibition

Sanchong Air Force Military Kindred Village No. 1



- 🕒 10:00-18:00 (Closed on the first Monday of each month)
- 💰 Free
- ☎️ 02-2979-1815
- 📍 Ln. 86, Zhengyi S. Rd., Sanchong Dist., New Taipei City
- 🚇 Catch the MRT Orange Line to the "Taipei Bridge" station, and walk to Wenhua South Road → Fude South Road → Alley No 86, Zhengyi South Road.

Now

From the Bird's eye view: Aerial Photography Exhibition

New Taipei City Yingge Ceramics Museum



- 🕒 09:30-17:00 (Closed on the first Monday of each month)
- 💰 NT\$80
- ☎️ 02-8677-2727
- 📍 No. 200, Wenhua Road, Yingge District, New Taipei City
- 🚇 Take a commuter train to Yingge train station, the museum is a 10-minute walk from the Wenhua Rd. exit.

Now Until 08/28

2021 Taiwan Ceramics Award

Pinglin Tea Museum of New Taipei City



- 🕒 09:00-17:00 (Closed on the first Monday of each month)
- 💰 NT\$80
- ☎️ 02-2665-6035
- 📍 No.19-1, Shuisongqikeng, Pinglin Dist., New Taipei City
- 🚇 Take the MRT to Xindian Station. Transfer onto the Xindian Bus Service, and take the 923 or Green 12 (G12). Get off at the stop for Pinglin Junior High School. The Museum is a 5-minute walk away.

Now Until 2023/05/08

APPRECIATEA

435 Art Zone



- 🕒 09:00-17:00 (Closed on the first Monday of each month)
- 💰 Free
- ☎️ 02-2969-0366
- 📍 No. 435, Zhongzheng Rd., Banqiao Dist., New Taipei City
- 🚇 Take the MRT Blue Line and get off at Banqiao Station. Leave the station from Exit 2 and transfer to the Bus No. 310, 307, 810, 857 or 786 and get off at "Banqiao Junior High School, Banqiao 435 Art Zone."

New Taipei City Yong 'An Arts Center



- 🕒 09:00-17:00 (Closed on the first Monday of each month)
- 💰 Free
- ☎️ 02-2929-8830
- 📍 2F., No. 390, Zhonghe Rd., Zhonghe Dist., New Taipei City
- 🚇 Take the MRT Orange Line and get off at Yongan Market Station.

06/04-06/28

Flawless Blue between Layers: Hsu Yaqi's Solo Exhibition

Wulai Atayal Museum New Taipei City



- 🕒 09:30-17:00
- 💰 Free
- ☎️ 02-2661-8162
- 📍 No. 12, Wulai St., Wulai Dist., New Taipei City
- 🚇 Take the MRT Xindian Line to the last stop at Xindian Station, transfer to Sindian Bus No. 849 and get off at Wulai, the terminal station.

Now

The Symphony of Fabric

Gold Museum, New Taipei City Government



- 🕒 09:30-17:00 (Closed on the first Monday of each month)
- 💰 NT\$80
- ☎️ 02-2496-2800
- 📍 No. 8, Jinguang Road, Ruifang District, New Taipei City
- 🚇 Taipei-Jinguashi: Taking bus route 1062 at the Exit 2 of Zhongxiao Fuxing MRT Station via Jiufen and get off at Jinguashi (Gold Museum).

Now Until 06/26

Alchemy: The Secrets of Turning Stone into Gold

The Lin Family Mansion and Garden



- 🕒 09:00-17:00 (Closed on the first Monday of each month)
- 💰 NT\$80
- ☎️ 02-2965-3061#23
- 📍 No. 9, Ximen Street, Banqiao District, New Taipei City
- 🚇 Take Banqiao Line (Blue line) to Fuzhong MRT Station, and leave by Exit 1. The Garden is an 8-minute walk from the station.

New Taipei City Arts Center



- 🕒 09:00-17:00 (Closed on the first Monday of each month)
- 💰 Free
- ☎️ 02-2253-4417
- 📍 No. 62, Zhuangjing Rd., Banqiao Dist., New Taipei City
- 🚇 Take the MRT Bannan Line (Blue Line) and get off at Xinpui Station, turn right after exit from exit 4. Get across the street, walk straight until reaching the Lane182, Sec.2, Wenhua Raod and turn right. Continue walking along the way for about 3 minutes before you arrive.

06/01-06/19

Go from Strength to Strength: The 8th Taiwanese Artist Group Exhibition

Shulin Arts Center



- 🕒 Performance Arts Hall opening hours: Ticket checking for hall entry starts 60 minutes before each performance. The audience will be allowed to enter and be seated 30 minutes before each performance.
- ☎️ 02-2682-0035
- 📍 No. 40-8, Shuxin Rd., Shulin Dist., New Taipei City
- 🚇 Shulin Station (Front) (Zhenqian Street) Exit Direction. Turn left and arrive after an 8-minute walk (beside the ShowTimes Movie Theater).

06/18, Sat., 14:30, 19:30
06/19, Sun., 14:30

Trees of Spring Series: M.O.V.E Theatre "The Lost Sperm"

Hakka Museum New Taipei City Government



- 🕒 09:00-17:00 (Closed on the first Monday of each month)
- 💰 Free
- ☎️ 02-2672-9996
- 📍 No. 239, Longen Street, Sanxia District, New Taipei City
- 🚇 MRT → get off at Yongning station (Blue line), then take Taipei Bus No. 917, get off at Dingpu station (Blue line), then take Taipei Bus No. 981.

06/01-06/18

The Infinite Tamsui River: Jin-xing Jiang's Graduation Exhibition