

新北市藝遊

Arts and Museum Events in New Taipei City

English Version

3

Mar. 2020

黑啤
BEERU is on air at TAIWAN BAR

直播中
ON AIR

1.17 FRI. — 5.31 SUN.
09:30-18:30

府中 15 新北市動畫故事館 5F

QR Code

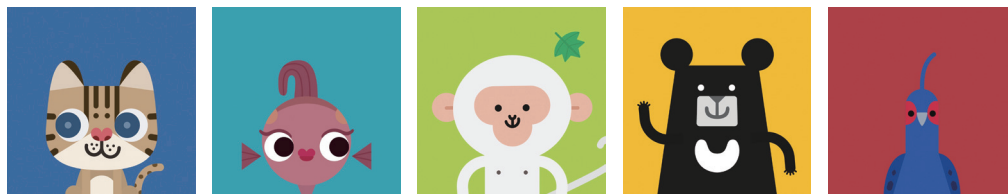
cover story

BEERU is on air at TAIWAN BAR

In the past, when “Taiwan Bar” popped up into discussion, one would immediately connect that name with an animated history program, or a YouTube channel dedicated to various topics. Or, the new media behind the projection on Taipei 101 in the 2020 New Year. Among these memorable creations, one could never miss Happy, a chubby, dark-colored Formosan black bear with big ears and a plump body. Since the first second of Taiwan Bar’s inaugural video, Happy has never stopped his signature greeting. His insatiable curiosity and appetite for food leaves a strong impression on his audience, and steals the hearts of the audience, young and old.

Six years of perfect reenactment

This show takes a retrospective on Happy’s six-year career. Since 2014, Happy has been the headliner in Taiwan’s historical events, which dates back to the Dutch and Spanish occupation. The setting of his performances ranges from the Age of Discovery to the heydays of Dadaocheng, in which Happy enacts how to drink matcha and Hakka lai-cha, covering topics from romantic relationships to principles of the system. Viewing hits of his single feature grow from zero to two millions, more than 800 thousand people are now his subscribers. In “Fight for the economy,” for example, Happy’s exceptional performance turns the dry and heavy economic theories into interesting stories. Sometimes he assumes the role of a CEO, along his teammate Bai-mi, who acts as his employee, demonstrates how



capital and labor force provide incentives to domestic economic growth. Sometimes he is the dedicated partner of Hung-gui, another capable teammate. Altogether they effectively interpret relationships within the framework of diminishing marginal utility. You must have also remembered Happy’s dancing skills, which he never hesitates to showcase in the “Dance Bar” series, and perform a series of repertoire from ballet, contemporary, folk dance to hip-hop.

Dissecting animation with Happy

In Happy’s live studio, one does not, of course, see the final products of animation. Rather, they see endless events taking place outside the frame. Looking for a worthwhile topic involves curating information from luminous books and online documents. Moreover, a good video requires the design of engaging dialogues and convincing character movement. Impressive style and movement for Happy, and emotionally engaging soundtracks that complement the video content, are also keys to success. As the on-site staff will testify, all these tasks, difficult and frustrating at times, often resulted in an immeasurable sense of achievement. This time Happy will assume the role of your guide, taking you to an explorative journey of Taiwan bar.

Moreover, you will get to participate the one and only “Who wants sausages?” Game is only available in the studio. You will get to choose your own costumes and compete with your friends in a charade, seeing who is quicker and more agile. We strongly encourage you to give it a try.



BEERU is on air at TAIWAN BAR

Now Until 05/31
Fuzhong 15 (No 15, Fuzhong Road, Banqiao District, New Taipei City)
02-2968-3600#211
www.fuzhong15.ntpc.gov.tw

Into the Mines- Reading a Cultural Route

The Shuijinjiu area of the New Taipei City contains numerous former mining sites, documenting the industry and its intertwined history with the local life. This exhibit regards the relic mining sites as a classical text that could be explored and perused through the “cultural routes,” and guides the audience on a journey through valleys and planes of the mines.



Date 03/30-06/28
Venue Gold Museum, New Taipei City Government



No. 8, Jinguang Road, Ruifang District, New Taipei City
02-2496-2800
09:30-17:00 (Closed on the first Monday of each month)
Taipei-Jinguashi: Taking bus route 1062 at the Exit 2 of Zhongxiao Fuxing MRT Station via Jiufen and get off at Jinguashi.

The Kick Wheel Show

Master Zhan Guo-xiang is a renowned potter from Yingge. During the presentation he will show you how to create pottery by using a traditional jigger, which was a common tool of potters in early Taiwanese studios. The jigger forms an essential part of the traditional pottery craft. It moves through pedaling, and enables the potter to mold the clay, allowing him to create unique objects with bare hands.



Date Sat- Sun, Holiday
Venue New Taipei City Yingge Ceramics Museum



No. 200, Wenhua Road, Yingge District, New Taipei City
02-8677-2727
09:30-17:00 (Closed on the first Monday of each month)
Take a commuter train to Yingge train station, the museum is a 10-minute walk from the Wenhua Rd. exit.

Grand Tour of Tea: An Amazing Adventure

This exhibition traces the expansion of tea through artifacts found along historic trade routes. Discover how tea became the most popular drink in the world, crossing borders and becoming part of local cultures, to play a key role in the shifting geopolitical landscape. Co-curated by the New Taipei City Pinglin Tea Museum and the National Museum of History.



Date Now Until 06/14
Venue Pinglin Tea Museum of New Taipei City



No. 19-1, Shuisongqikeng, Pinglin Dist., New Taipei City
02-2665-6035
09:00-17:00 (Closed on the first Monday of each month)
Take the MRT to Xindian Station. Transfer onto the Xindian Bus Service, and take the 923 or Green 12 (G12). Get off at the stop for Pinglin Junior High School. The Museum is a 5-minute walk away.

Westerner’s Life Exhibition Hall

The European Living Quarter is based in Fort San Domingo and the British Consular Residence. The Quarter retains the original building style, and captures the working life, clothing, food and tea culture. We invite you to travel with us back to Tamsui and be part of the British Consul’s life in the nineteenth century.



Date NOW
Venue Fort San Domingo



No. 1, Ln. 28, Zhongzheng Rd., Tamsui Dist., New Taipei
02-2623-1001
09:30-17:00 (Closed on the first Monday of each month)
MRT Tamsui station is the terminal station. Once you arrive, you can take buses R26, 836 or 857 to Fort San Domingo

Wine Bar- Asian Drinking Culture

This exhibition is co-curated by the New Taipei City Shisanghang Museum and the National Museum of History. The drinking utensils and historical records provide a trajectory of the East Asian drinking culture, and the interactive experience between the East and the West. The objects are eager to tell their stories, and those stories are full of nuanced flavor and an exquisite aftertaste.



Date Now Until 06/21
Venue Shisanghang Museum of Archaeology



- 📍 No. 200, Museum Road, Bali District, New Taipei City
- ☎ 02-2619-1313
- 🕒 09:30-17:00 (Closed on the first Monday of each month)
- 🚶 MRT → Tamsui MRT Station → Ferry → Shuttle Bus Red No. 13 Shisanghang Museum of Archaeology; or Ferry → Shuttle Bus Red No. 22, Bus No. 704 → Ren'ai

Guided Tours

The Lin Family Mansion and Gardens is listed as national heritage. It is the most intact among the traditional gardens in Taiwan. Its loggia, ponds and buildings retain their original charm and look. Our dedicated volunteer team provide four guided tours per day, with an extra session available on public holidays. Japanese and English tours can be booked in advance.



Date Now
Venue The Lin Family Mansion and Garden



- 📍 No. 9, Ximen Street, Banqiao District, New Taipei City
- ☎ 02-2965-3061#23
- 🕒 09:00-17:00 (Closed on the first Monday of each month)
- 🚶 Take Banqiao Line (Blue line) to Fuzhong MRT Station, and leave by Exit 1. The Garden is an 8-minute walk from the station.

2020 New Taipei City Joint Exhibition

Blessed with a diverse and natural scenery, blended with an urban-scape, the New Taipei City is known for its rich culture and numerous cultural settlements established by artists. This exhibition aims to bring the artists together and promote the rich visual arts and culture of the City.



Date 03/20-04/22
Venue New Taipei City Arts Center



- 📍 No. 62, Zhuangjing Rd., Banqiao Dist., New Taipei City
- ☎ 02-2253-4417
- 🕒 09:00-17:00 (Closed on the first Monday of each month)
- 🚶 Take the MRT Bannan Line (Blue Line) and get off at Xinpu Station, turn right after exit from exit 4. Get across the street, walk straight until reaching the Lane182, Sec.2, Wenhua Raod and turn right. Continue walking along the way for about 3 minutes before you arrive.

Prof Song's Storytime- When Beethoven was in Vienna

As we celebrate Beethoven's 250th birthday, we invite Professor Song Yun-Peng to take us through a series of Beethoven's piano sonatas. Professor Song, who is known as "Piano Godfather of Taiwan," will present the event as "storytime recital." Through live performance and humorous yet engaging storytelling, Professor Song will make classical music a friend, even lover, of yours.



Date 03/15, Sun
Venue Xinzhuang Cultural Arts Center



- 📍 No. 133, Zhongping Rd., Xinzhuang Dist., New Taipei City
- ☎ 02-2276-0182
- 🕒 09:00-17:30 (Closed on the first Monday of each month)
- 🚶 Take "Nangang Exhibition Hall-Yongning" line and get off at Xinpu Station. Then, take bus No. 805 or Blue No. 18 at MRT exit No. 5 and get off the bus at the "Xintai Swimming Pool" Stop.

Birds Returning Home

This exhibition is inspired by migratory birds moving south in winter; the stylistic design is based on the uniform flapping of wings of the birds in a group. By juxtaposing several birds in line, coupling with fading light effect, the work evokes the image of birds migrating south. This is a metaphoric expression of the nostalgia felt by those away from home.



Date Now
Venue Air Force San-Chong Village



- 📍 Ln. 86, Zhengyi S. Rd., Sanchong Dist., New Taipei City
- ☎ 02-2979-1815
- 🕒 10:00-18:00 (Closed on the first Monday of each month)
- 🚶 Take the "Zhonghe Xinlu Line - Luzhou Line" and get off at "St Ignatius High School Station" or "Sanhe Junior High School". Transfer to Bus No. 221 or 306 to get off at "the end of Zhenyi South Road"

The symphony of fabric

Amongst the Taiwanese indigenous communities, the Atayal people are known for their weaving skills. Their traditional costumes are mostly woven with ramie, then interwoven with colored wool or with shell decoration. The costumes includes top, vest, kerchief, skirt and headdress. Colors vary from region to region.



Date Now
Venue Wulai Atayal Museum New Taipei City



- 📍 No. 12, Wulai St., Wulai Dist., New Taipei City
- ☎ 02-2661-8162
- 🕒 09:30-17:00
- 🚶 Take the MRT Xindian Line to the last stop at Xindian Station, transfer to Sinding Bus No. 849 and get off at Wulai, the terminal station.

Eperimental Game Show – Recombinant Game DNA

This program present the endless possibilities and creativity of game-design. Our games include the ones of virtual-reality, augmented reality and alternative reality game. Party game and PC games are also available. Through "playing," you will develop a new perspective of the "game" media.



Date 03/10-05/31
Venue Fuzhong 15



- 📍 No 15, Fuzhong Road, Banqiao District, New Taipei City
- ☎ 02-2968-3600#211
- 🕒 09:30-18:30 (Closed on the first Monday of each month)
- 🚶 Taking MRT Line 5 to Fuzhong Station, Exit via Exit No 2. The Gallery is located approximately 40 meters at the rear of the Exit. Alternatively, exit MRT station via Exit 1, turn right at the rear of the Gate, cross the Road and proceed straight ahead. Approximately 3 minutes to the Gallery.

City Strolling- Yang Lei Solo Exhibition

The sketches in this exhibition serve as a faithful record of their creator's artistic life, whose days evolve around her creative activity. She brings drawing into her life, hence herself into her own work. Every brush and stroke is a result of meditative calmness. Despite the hubbub of the world, the artist remains true to herself.



Date Now Until 03/22
Venue 435 Art Zone



- 📍 No. 435, Zhongzheng Rd., Banqiao Dist., New Taipei City
- ☎ 02-2969-0366
- 🕒 09:00-17:00 (Closed on the first Monday of each month)
- 🚶 Take the MRT Blue Line and get off at Banqiao Station. Leave the station from Exit 2 and transfer to the Bus No. 310, 307, 810, 857 or 786 and get off at "Banqiao Junior High School, Banqiao 435 Art Zone."

Dressing the Pottery- New Taipei City Ceramic Glaze Research Group Exhibition

The Ceramic Glaze Research Group is dedicated to the promotion of "Triangle Formula," an approach to create ceramic coating. This annual exhibition is a wonderful opportunity for the ceramic artists to showcase their artistic creations, share their knowledge, and most of all, celebrate the members' commitment and hard work throughout the years.



Date Now Until 04/12
Venue Hakka Museum New Taipei City Government



- 📍 No. 239, Longen Street, Sanxia District, New Taipei City
- ☎ 02-2672-9996
- 🕒 09:00-17:00 (Closed on the first Monday of each month)
- 🚶 MRT → get off at Yongning station (Blue line), then take Taipei Bus No. 917, get off at Dingpu station (Blue line), then take Taipei Bus No. 981.

22nd "Love in Art" Traveling Exhibition- Works by Artists with Special needs

The participating artists are from various age groups with different physical and mental conditions. The artists unleash their creativity and artistic talent through this exhibition, bringing their life experience and internal landscape to full play. This exhibition is an opportunity for the general public to better understand, and appreciate, the different life and artistic expressions of people with special needs.



Date Now Until 03/15
Venue New Taipei City Yongan Arts Center



- 📍 2F., No. 390, Zhonghe Rd., Zhonghe Dist., New Taipei City
- ☎ 02-2929-8830
- 🕒 11:00-19:00 (Closed on the first Monday of each month)
- 🚶 Take the MRT Orange Line and get off at Yongan Market Station.