

新北市藝遊

Arts and Museum Events in New Taipei City

English Version

9

Sep. 2020

就是綠生活
一起共好愛生活



'20
9.19 - 9.20
SAT - SUN
新北
大都會公園

GREEN LIFE FESTIVAL

綠生活音樂節

跟著風車
找到你心中的綠生活



cover story

2020 Green Life Music Festival

As global warming increases, we have now become highly aware of the urgency to maintain a sustainable environment that begins from our everyday life. On September 19th and 20th, the New Taipei City have organized a two-day "2020 Green Life Music Festival" to promote a greener life in Metropolitan Park, to invite you to share a "5G Collaboration."

Green Fusion Music: Music, lawn, unplug and double stage enrichment

The highlight of the Festival - the "Double Stage Concert," will provide you with the performances of first-class artists, including Eve Ai, Leo Wong, ØZI, Haor, The Last Day of Summer/831 and Summer Lei. They will bring a wide range of repertoire, covering genres including hip-pop, folklore, electronic and soft rock. In addition, six ensembles have been selected to participate in the concert, exploring the musical energy of a greener Life.

Green Creation: Market and food with green creativity

Aside from the awesome musical fest, we have organized a "Green Market," "Green Fairy Canteen," "Green Workshop," "Green Collaboration Project" and other stands in the Park. A wide range of artworks and cuisines are ready for you come and give it a try.



Green Art: Public Installation, art, landscape, bringing beauty closer

Following the natural contour of the Metropolitan Park, you will encounter a green-life art installation. Let's follow the windmill to find an ideal green life.

Green Style: Picnic, relaxation and pets, immerse in a green ambiance

We will set up special tent and picnic areas (not for overnight stay), in which you can take refuge from the noisy city and embrace mother nature, enjoying the musical fest in the uppermost comfort. We have also set up a pet-friendly quarter, allowing you to enjoy the moment of pleasure with your beloved pets.

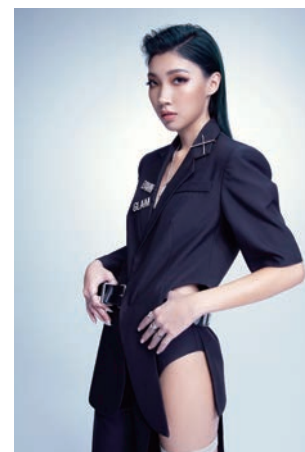
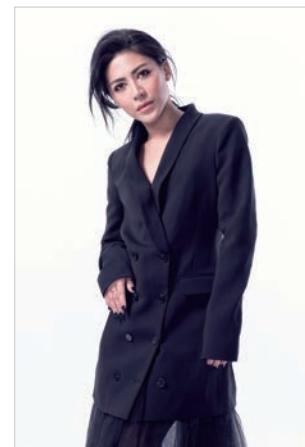
Green Yourself: Sports, yoga, and family to create a mental oasis

Yoga instructors will be offering onsite classes, taking you and your loved ones to engage with the natural environment with reinforced your concentration. This will allow you to be at ease with yourself. We have also invited professional trainers to provide family-friendly fitness classes, and hurdles for you to test your stamina. Also, the ever popular OPEN! Family will be here to celebrate the fall with all our visitors!

Fall is a great season for outdoor family activities and picnic. Let us enjoy, and create a wonderful time at the New Taipei City Metropolitan Park, surrounded by the beautiful melody of Green Life Music Festival.

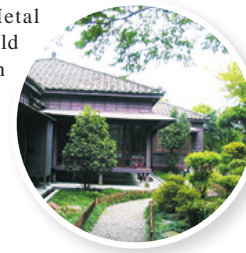
2020 Green Life Music Festival

- 09/19-09/20
- New Taipei Metropolitan Park
- 02-2960-3456#4569
- www.facebook.com/greenlifefestival



2020 New Taipei City International Metal Crafts Competition Exhibition

The 2020 New Taipei City International Metal Crafts Competition Exhibition is held in Gold Refining Building and JinShuei Special Exhibition Hall in the Museum until November 1. The exhibition comprises 24 pieces of award-winning works from the Jewelry and Object Categories.



Date Now Until 11/01
Venue Gold Museum, New Taipei City Government



- No. 8, Jinguang Road, Ruifang District, New Taipei City
- 02-2496-2800
- 09:30-17:00 (Closed on the first Monday of each month)
- Taipei-Jinguashi: Taking bus route 1062 at the Exit 2 of Zhongxiao Fuxing MRT Station via Jiufen and get off at Jinguashi.

Subtropical Garden: Painted Ceramics of Our Era

This exhibition brings to you, all at once, the colored porcelains that acknowledge the motif of the unique yet precious Formosan landscape and flora and fauna. Through the historical trajectory, the audience will experience the porcelain colors that define our era, and the inspirations promised by the rare animals and vegetation.



Date Now Until 10/11
Venue New Taipei City Yingge Ceramics Museum



- No. 200, Wenhua Road, Yingge District, New Taipei City
- 02-8677-2727
- 09:30-17:00 (Closed on the first Monday of each month)
- Take a commuter train to Yingge train station, the museum is a 10-minute walk from the Wenhua Rd. exit.

Savoring Tea: Exploring Senses and Mind

With "sensual tea tasting" as theme, this show adopts scientific analysis to explore the relationship between human senses and tea tasting. Through innovative interactive technology, you will get to "see" the exhibits while experiencing firsthand the tea tasting methods and knowhow with your intuit and senses.



Date Now Until 11/08
Venue Pinglin Tea Museum of New Taipei City



- No. 19-1, Shuisongqikeng, Pinglin Dist., New Taipei City
- 02-2665-6035
- 09:00-17:00 (Closed on the first Monday of each month)
- Take the MRT to Xindian Station. Transfer onto the Xindian Bus Service, and take the 923 or Green 12 (G12). Get off at the stop for Pinglin Junior High School. The Museum is a 5-minute walk away.

"The Battle of Tamsui" Story Hall

What were the hongs in Tamsui like during the Sino-Franco War in 1884? We will present the history of this battle in a leisurely manner, and reveal to you the details of the export trade of the nineteenth-century Tamsui Harbor, as well as the role played by hongs in the region at that time.



Date Now Until 12/31
Venue Douglas Lapraik & Co.



- No.316, Zhongzheng Rd., Tamsui Dist., New Taipei City 251, Taiwan (R.O.C.)
- 02-2629-9522
- 09:30-19:30 (Closed on the first Monday of each month)
- MRT Tamsui station is the terminal station, then take buses R26 ,836 or 857 to Little White House, then walk back to Zhongzheng for about 100 meters.

Bali Audiovisual Exploration and Bali Audiovisual Collection

Shihnsanhang Museum have teamed up with Co-coism and three young artists to develop the "Visual Archeology, Audio Sensitivity." We invite visitors to explore the historic town of Bali with us. Through the observation and experience of the old Bali town, and dialogue with artworks, we encourage visitors to uncover a new spirituality for this era.



Date 09/05-09/30
Venue Shihnsanhang Museum of Archaeology



- 📍 No. 200, Museum Road, Bali District, New Taipei City
- ☎ 02-2619-1313
- 🕒 09:30-17:00 (Closed on the first Monday of each month)
- 🚶 MRT → Tamsui MRT Station → Ferry → Shuttle Bus Red No. 13 Shihnsanhang Museum of Archaeology; or Ferry → Shuttle Bus Red No. 22, Bus No. 704 → Ren'ai

Guided Tours

The Lin Family Mansion and Gardens is listed as national heritage. It is the most intact among the traditional gardens in Taiwan. Its loggia, ponds and buildings retain their original charm and look. Our dedicated volunteer team provide four guided tours per day, with an extra session available on public holidays. Japanese and English tours can be booked in advance.



Date Now
Venue The Lin Family Mansion and Garden



- 📍 No. 9, Ximen Street, Banqiao District, New Taipei City
- ☎ 02-2965-3061#23
- 🕒 09:00-17:00 (Closed on the first Monday of each month)
- 🚶 Take Banqiao Line (Blue line) to Fuzhong MRT Station, and leave by Exit 1. The Garden is an 8-minute walk from the station.

The Infinite Loop of Contemporary Art- The 7th Northern Taiwan Joint Exhibition

The aim of this show is to articulate the tangible and intangible aspects of the contemporary art society, through the multiple visual languages offered by different artists. It is our wish to provide a platform for artists from different generations to start a dialogue, to stimulate each other's creative thinking, and to take a glimpse of the future possibility in contemporary art.



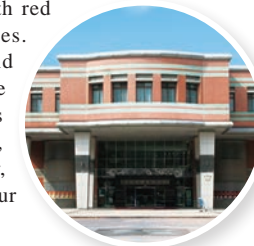
Date 09/04-09/22
Venue New Taipei City Arts Center



- 📍 No. 62, Zhuangjing Rd., Banqiao Dist., New Taipei City
- ☎ 02-2253-4417
- 🕒 09:00-17:00 (Closed on the first Monday of each month)
- 🚶 Take the MRT Bannan Line (Blue Line) and get off at Xinpu Station, turn right after exit from exit 4. Get across the street, walk straight until reaching the Lane182, Sec.2, Wenhua Raod and turn right. Continue walking along the way for about 3 minutes before you arrive.

Xinzhuang Culture and Arts Center- A headquarter of cultural preservation and promotion

Our building has a facade constructed mainly with red brick, embellished by light green and grey tiles. The building design comprises both rectilinear and circular forms. It is a multifunctional arts center whose space caters to a wide variety of activities. Our spaces include concert hall, arts space, periodical room, reading room, and Taiwanese puppetry heritage center, providing a wide array of arts and cultural access to our users.



Date Now
Venue Xinzhuang Cultural Arts Center



- 📍 No. 133, Zhongping Rd., Xinzhuang Dist., New Taipei City
- ☎ 02-2276-0182
- 🕒 09:00-17:30 (Closed on the first Monday of each month)
- 🚶 Take "Nangang Exhibition Hall-Yongning" line and get off at Xinpu Station. Then, take bus No. 805 or Blue No. 18 at MRT exit No. 5 and get off the bus at the "Xintai Swimming Pool" Stop.

2020 National Heritage Day

Sanchong Air Force Military Kindred Village No.1 is the only fortress village that has retained in entirety. In this event, we invite Liu Wei-guang as our special guide. As a renowned architect, Mr. Liu will take us through the mysterious village quarter that has been previously closed to the public. Let's revisit the village life once more.



Date 09/12-09/13
Venue Sanchong Air Force Military Kindred Village No. 1



- 📍 Ln. 86, Zhengyi S. Rd., Sanchong Dist., New Taipei City
- ☎ 02-2979-1815
- 🕒 10:00-18:00 (Closed on the first Monday of each month)
- 🚶 Take the "Zhonghe Xinlu Line - Luzhou Line" and get off at "St Ignatius High School Station" or "Sanhe Junior High School". Transfer to Bus No. 221 or 306 to get off at "the end of Zhenyi South Road"

The symphony of fabric

Amongst the Taiwanese indigenous communities, the Atayal people are known for their weaving skills. Their traditional costumes are mostly woven with ramie, then interwoven with colored wool or with shell decoration. The costumes includes top, vest, kerchief, skirt and headdress. Colors vary from region to region.



Date Now
Venue Wulai Atayal Museum New Taipei City



- 📍 No. 12, Wulai St., Wulai Dist., New Taipei City
- ☎ 02-2661-8162
- 🕒 09:30-17:00
- 🚶 Take the MRT Xindian Line to the last stop at Xindian Station, transfer to Sndian Bus No. 849 and get off at Wulai, the terminal station.

Dot, Line and Plane: Playing Art through Picture Books

Point, line and plane is the foundation of visual arts. This exhibition will dissect the dots, lines and planes in our daily life. You will learn how to create our own unique style with these three basic elements through picture books.



Date Now Until 12/31
Venue Fuzhong 15



- 📍 No 15, Fuzhong Road, Banqiao District, New Taipei City
- ☎ 02-2968-3600#211
- 🕒 09:30-18:30 (Closed on the first Monday of each month)
- 🚶 Taking MRT Line 5 to Fuzhong Station, Exit via Exit No 2. The Gallery is located approximately 40 meters at the rear of the Exit. Alternatively, exit MRT station via Exit 1, turn right at the rear of the Gate, cross the Road and proceed straight ahead. Approximately 3 minutes to the Gallery.

The Correct Answer through the Concentrated Vision - Hu Hau-ting's Solo Exhibition

As an orthodontist, Hu creates the perfect smile by a set of regulated aesthetic principles in her profession, therefore there is only one standard smile in the world. In this show, the artist pays her tribute to the various smiles that have been gradually concealed, eliminated and disappeared.



Date 09/02-09/29
Venue 435 Art Zone



- 📍 No. 435, Zhongzheng Rd., Banqiao Dist., New Taipei City
- ☎ 02-2969-0366
- 🕒 09:00-17:00 (Closed on the first Monday of each month)
- 🚶 Take the MRT Blue Line and get off at Banqiao Station. Leave the station from Exit 2 and transfer to the Bus No. 310, 307, 810, 857 or 786 and get off at "Banqiao Junior High School, Banqiao 435 Art Zone."

Recollecting Hakka – A Tribute to Fifteen Years of Achievement

In celebrating the fifteenth anniversary of the New Taipei City Hakka Cultural Center, we have invited talented artists who had worked with us in the past to hold a series of exhibition and cultural programs. Let's celebrate the rich Hakka culture!



Date Now Until 10/25
Venue Hakka Museum New Taipei City Government



- 📍 No. 239, Longen Street, Sanxia District, New Taipei City
- ☎ 02-2672-9996
- 🕒 09:00-17:00 (Closed on the first Monday of each month)
- 🚶 MRT → get off at Yongning station (Blue line), then take Taipei Bus No. 917, get off at Dingpu station (Blue line), then take Taipei Bus No. 981.

TRIO, Art Exhibition 2.0

The three artists, Li Pi-Hua, Jane Meng-Jin and Lin Hsin-Yi, have been trained at the National Taiwan Normal University, Graduate School of Fine Arts. The trio enrich this exhibition with artworks that has distilled through their life experience. Employing canvas, paint and mixed media in their practice, the trio brings their life landscape to you.



Date 09/03-09/28
Venue New Taipei City Yong'an Arts Center



- 📍 2F., No. 390, Zhonghe Rd., Zhonghe Dist., New Taipei City
- ☎ 02-2929-8830
- 🕒 11:00-19:00 (Closed on the first Monday of each month)
- 🚶 Take the MRT Orange Line and get off at Yong'an Market Station.