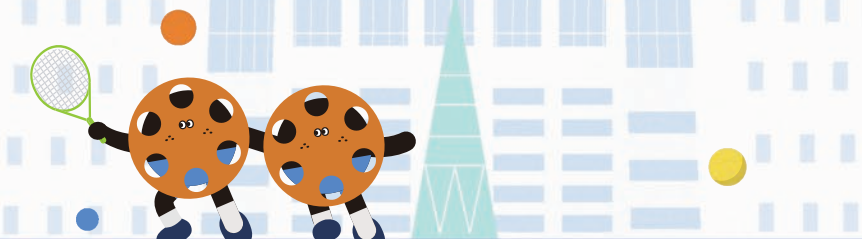


Arts and Museum Events in New Taipei City

新北市藝遊

2021^{Sep.}
9月號



2021新北市兒童藝術節



English Version

Cover Story



2021 New Taipei City Children's Art Festival – Hello! Monsters

Hoorary! The Monsters have a Theme Song!

We are now in September and the monsters are as competitive on the arena as ever! This month we are meeting two new friends for the first time. We have the “Kitty Fish,” a new monster designed by our young audience that was voted the most popular last year. Our second friend “Klique” is crazy about taking photos and will be responsible for capturing the memorable moments of his monster friends on the arena.

We have a theme song for the first time! It has a catchy melody and an easy dance movement, which will surely turn everyone into a superstar! This year, we have launched the special “Dance your way out” program. Why not work on your imagination and create your very own monster dance routine? All you need to do is to upload the video to your Facebook or Instagram pages and tag the New Taipei City Cultural Bureau, then you will enter our prize draw!



We are here to Color your Weekend!

This year, we will take you to our marvel grassland, which can only be visited in another space and time. We have cultivated all corners of the grassland with colorful new monsters, which are specifically created for us by renowned artists. All of them have unique stories to tell. In *Cheerleading Dinosaurs*, Lee Wen-Cheng has brought to us a dinosaur family that uplifts the spirit of our monster contestants. In Huang Jian-Huan's *Light in the Air*, the illuminous lollipops brighten and color our night, making the nocturnal sky a playground of your imagination.

Our weekend performance programs are ending soon. On September 10th we will present *Prince*



Snow by Puppet & Its Double. On September 17th, Acrobat Taiwan will bring to us *Circuit Rhapsody*. Don't miss out on the last of our spectacular weekend specials!

We are open 24/7!

This year, our monster stars have new identifies for this art festival. Yes, they are now the spokespeople of eight of our galleries and museums. Our monster stars will bring all kind of fun videos, unique DIY classes and game series to our online platform, 24 hours a day and 7 days a week. Now, you can exercise your mind and body in your comfortable home!

We have also moved our “Monster's Tournament” online. This year, we have created ten interactive online AR programs, each program features



2021 New Taipei City Children's Art Festival – Hello! Monsters

📅 Now Until 10/31
☎ 02-2950-9750#106
🌐 www.newtaipei-summer.tw



Editor's Choice



Grandma Fruity Pie's Biggest Secret: Story Party Exhibition

After more than twelve months of preparation, *Fruity Ice Cream* is finally coming to Fuzhong 15 for its biggest exhibition ever! *Fruity Ice Cream*, which has been on-air for more than 23 years, remains the record holder of the longest-running TV show for preschoolers in Taiwan. Due to COVID-19 restrictions, Fuzhong 15 had to close its doors to our visitors. Despite this, our team continues to explore all possible avenues to bring vibrant energies and fascinating stories to our audience in the post-COVID world.

This time we have moved absolutely everything to Fuzhong 15! You will get to see the living room of Granny Fruity, the 3-meter tall Shop Robot, and participate in the ever popular “Little Warrior” game series. Wait, we have more! Granny Fruity and her friends

are coming to us with “Little Fruit and its mischievous classmates,” an animation work created and directed by local artists. We will reveal the behind-scene journey of *Fruity Ice Cream*, making this exhibition a most memorable experience this summer. Also, don't forget to be part of our “Creative Storytelling” activity. Tell us a story when you are in our exhibition space and upload the video via our website. You will enter the prize draw and get the chance to participate in the live recording of *Fruity Ice Cream*.

Due to the existing health and safety procedures, we have to close part of our exhibitions. Prior bookings are essential. Please visit our website for registration details.



📅 Now Until 10/11
📍 Fuzhong 15
☎ 02-2968-3600#211
🌐 www.fuzhong15.ntpc.gov.tw



The Landscape of a Promenade: A Walk around the New Taipei Public Art

Do you still remember the hanging sculpture in the Banqiao Station lobby and its imposing red form? Do you remember the geometric wall pattern of the MRT Circular Line? Its black and white bands following you along on the escalator. As architectural extensions, they contribute to the beauty of our urban landscape and mingle with our environment, connecting different spaces around us. Public arts are the exhibits of a boundless gallery in our spatial imagination, serving as the meeting point between day-to-day life and culture. As part of its continuous urban development, New Taipei City has acquired more than 400 pieces of public artworks. These works complement the evolving urban fabric and initiate interactive dialogues with our audience.

Following the easing of COVID restrictions, the New Taipei City Cultural Bureau has brought back the 2020 public art walk and organized a series of unique tours. These routes are based on “Urban Discovery – Fuzhong Aesthetics,” “Blue Coastal Line – Cultural Heritage,” “Red Ceramics – Sanying Culture” and “Mountainous Gold – Mining Culture.” The tours consist of seven routes, covering art forms such as photography, architecture, illustrations, cultural heritage and performing arts. All local cultural institutions form an essential part of your journey. We invite you to “appreciate and participate, turning your daily life into art.” Together we will transform beauty and imagination into reality.



📅 Now Until 10/31
📍 Cultural Affairs Department,
New Taipei City Government
☎ 02-2969-0366#55
🌐 www.culture.ntpc.gov.tw



Shihsanhang Museum of Archaeology



- 🕒 09:30-17:00 (Closed on the first Monday of each month)
- 💰 NT\$80
- ☎️ 02-2619-1313
- 📍 No. 200, Museum Road, Bali District, New Taipei City
- 🚇 MRT → Tamsui MRT Station Ferry → Shuttle Bus Red No. 13 Shihsanhang Museum of Archaeology; or Ferry → Shuttle Bus Red No. 22, Bus No. 704 → Ren'ai.

Now
Many faces, many stories – A cultural survey of tribal masks

Tamsui Historical Museum, New Taipei City



- 🕒 09:30-17:30 (Closed on the first Monday of each month)
- 💰 NT\$80
- ☎️ 02-2623-1001
- 📍 No. 1, Ln. 28, Zhongzheng Rd., Tamsui Dist., New Taipei
- 🚇 MRT Tamsui station is the terminal station. Once you arrive, you can take buses R26, 836 or 857 to Fort San Domingo.

Now
Fort San Domingo

Fuzhong 15



- 🕒 09:30-18:30 (Closed on the first Monday of each month)
- 💰 Free
- ☎️ 02-2968-3600#211
- 📍 No 15, Fuzhong Road, Banqiao District, New Taipei City
- 🚇 Taking MRT Line 5 to Fuzhong Station, Exit via Exit No 2. The Gallery is located approximately 40 meters at the rear of the Exit. Alternatively, exit MRT station via Exit 1, turn right at the rear of the Gate, cross the Road and proceed straight ahead. Approximately 3 minutes to the Gallery.

Now Until 10/11
Grandma Fruity Pie's Biggest Secret: Story Party Exhibition

Xinzhuang Cultural Arts Center



- 🕒 09:00-17:30 (Closed on the first Monday of each month)
- 💰 Free
- ☎️ 02-2276-0182
- 📍 No. 133, Zhongping Rd., Xinzhuang Dist., New Taipei City
- 🚇 Take "Nangang Exhibition Hall-Yongning" line and get off at Xinpu Station. Then, take bus No. 805 or Blue No. 18 at MRT exit No. 5 and get off the bus at the "Xintai Swimming Pool" Stop.

Now Until 12/24
The Su Jin Yin Puppet Troupe: A Ten-year Anniversary Exhibition

Sanchong Air Force Military Kindred Village No. 1



- 🕒 10:00-18:00 (Closed on the first Monday of each month)
- 💰 Free
- ☎️ 02-2979-1815
- 📍 Ln. 86, Zhengyi S. Rd., Sanchong Dist., New Taipei City
- 🚇 Catch the MRT Orange Line to the "Taipei Bridge" station, and walk to Wenhua South Road → Fude South Road → Alley No 86, Zhengyi South Road.

09/20 (Mon.)
2021 National Heritage Day – Let's pay the First Village a visit online!

New Taipei City Yingge Ceramics Museum



- 🕒 09:30-17:00 (Closed on the first Monday of each month)
- 💰 NT\$80
- ☎️ 02-8677-2727
- 📍 No. 200, Wenhua Road, Yingge District, New Taipei City
- 🚇 Take a commuter train to Yingge train station, the museum is a 10-minute walk from the Wenhua Rd. exit.

Gold Museum, New Taipei City Government



- 🕒 09:30-17:00 (Closed on the first Monday of each month)
- 💰 NT\$80
- ☎️ 02-2496-2800
- 📍 No. 8, Jinguang Road, Ruifang District, New Taipei City
- 🚇 Taipei-Jinguashi: Taking bus route 1062 at the Exit 2 of Zhongxiao Fuxing MRT Station via Jiufen and get off at Jinguashi (Gold Museum).

Now Until 2022/01/02
Branching Phenomenon : The Genealogy of Taiwan Contemporary Jewelry and Metal Arts

Pinglin Tea Museum of New Taipei City



- 🕒 09:00-17:00 (Closed on the first Monday of each month)
- 💰 NT\$80
- ☎️ 02-2665-6035
- 📍 No.19-1, Shuisongqikeng, Pinglin Dist., New Taipei City
- 🚇 Take the MRT to Xindian Station. Transfer onto the Xindian Bus Service, and take the 923 or Green 12 (G12). Get off at the stop for Pinglin Junior High School. The Museum is a 5-minute walk away.

Now
Savoring Tea: Exploring Senses and Mind (online exhibition)

435 Art Zone



- 🕒 09:00-17:00 (Closed on the first Monday of each month)
- 💰 Free
- ☎️ 02-2969-0366
- 📍 No. 435, Zhongzheng Rd., Banqiao Dist., New Taipei City
- 🚇 Take the MRT Blue Line and get off at Banqiao Station. Leave the station from Exit 2 and transfer to the Bus No. 310, 307, 810, 857 or 786 and get off at "Banqiao Junior High School, Banqiao 435 Art Zone."

09/02-09/13
Delta E: A Joint Photography Exhibition

New Taipei City Yong 'An Arts Center



- 🕒 11:00-19:00 (Closed on the first Monday of each month)
- 💰 Free
- ☎️ 02-2929-8830
- 📍 2F., No. 390, Zhonghe Rd., Zhonghe Dist., New Taipei City
- 🚇 Take the MRT Orange Line and get off at Yongan Market Station.

08/26-10/17
Unboxing the City: The Beauty of Zhonghe and Yonghe

Wulai Atayal Museum New Taipei City



- 🕒 09:30-17:00
- 💰 Free
- ☎️ 02-2661-8162
- 📍 No. 12, Wulai St., Wulai Dist., New Taipei City
- 🚇 Take the MRT Xindian Line to the last stop at Xindian Station, transfer to Sindian Bus No. 849 and get off at Wulai, the terminal station.

Now
The Symphony of Fabric

The Lin Family Mansion and Garden



- 🕒 09:00-17:00 (Closed on the first Monday of each month)
- 💰 NT\$80
- ☎️ 02-2965-3061#23
- 📍 No. 9, Ximen Street, Banqiao District, New Taipei City
- 🚇 Take Banqiao Line (Blue line) to Fuzhong MRT Station, and leave by Exit 1. The Garden is an 8-minute walk from the station.

Now
2021 National Heritage Day: Let's Pay a VR Visit to the First Village!

New Taipei City Arts Center



- 🕒 09:00-17:00 (Closed on the first Monday of each month)
- 💰 Free
- ☎️ 02-2253-4417
- 📍 No. 62, Zhuangjing Rd., Banqiao Dist., New Taipei City
- 🚇 Take the MRT Bannan Line (Blue Line) and get off at Xinpu Station, turn right after exit from exit 4. Get across the street, walk straight until reaching the Lane182, Sec.2, Wenhua Raod and turn right. Continue walking along the way for about 3 minutes before you arrive.

Now Until 11/28
2021 New Taipei City Music Star Concert

Shulin Arts Center



- 🕒 Performance Arts Hall opening hours: Ticket checking for hall entry starts 60 minutes before each performance. The audience will be allowed to enter and be seated 30 minutes before each performance.
- ☎️ 02-2682-0035
- 📍 No. 40-8, Shuxin Rd., Shulin Dist., New Taipei City
- 🚇 Shulin Station (Front) (Zhenqian Street) Exit Direction. Turn left and arrive after an 8-minute walk (beside the ShowTimes Movie Theater).

09/21 (Tue.) 19:30
Tribute to Mozart: A 230th Anniversary Music Concert

Hakka Museum New Taipei City Government



- 🕒 09:00-17:00 (Closed on the first Monday of each month)
- 💰 Free
- ☎️ 02-2672-9996
- 📍 No. 239, Longen Street, Sanxia District, New Taipei City
- 🚇 MRT → get off at Yongning station (Blue line), then take Taipei Bus No. 917, get off at Dingpu station (Blue line), then take Taipei Bus No. 981.

09/07-11/07
Threading through the Time of Taiwan: Winwing's Twined Flower Art Exhibition